

Modul

## VEX4000 - REVERSIBEL VARMEPUMPE

### VEX4000 - REVERSIBLE HEAT PUMP

Integrated reversible heat pump for VEX4000. The environmentally-friendly solution for ventilation, heating and cooling in an integrated air handling unit.



#### PRODUCT BENEFITS

- Extra low energy consumption and reduced environmental impact
- Ventilation, heating and cooling in one factory-tested unit
- No need for extra heating or cooling installations

#### Product description

The environmentally-friendly solution for ventilation, heating and cooling in an integrated air handling unit.

- One calculation incl. documentation and technical data via EXselectPRO
- One factory-tested unit
- One control system, the advanced EXcon control system
- One supplier for the whole installation
- No need for extra heating or cooling installations

#### Reference arguments

Reversible heat pump (RHP-ER/RHP)

##### FUNCTION AND APPLICATION

The environmentally-friendly solution for ventilation, heating and cooling in an integrated air handling unit.

- One calculation incl. documentation and technical data via EXselectPRO
- One factory-tested unit
- One control system, the advanced EXcon control system
- One supplier for the whole installation
- No need for extra heating or cooling installations

We supply reversible heat pumps in two versions:

##### VEX4000RHP-ER

With the rotary heat exchanger housed between the evaporator and the condenser.

With this solution you get:

- The lowest energy consumption
- Option for cold recovery

##### VEX4000RHP

With heat exchanger and heat pump housed in separate modules. This solution can be selected with either a rotary heat exchanger or a plate heat exchanger (counterflow heat exchanger or crossflow heat exchanger)

With this solution you get:

- A compact solution, i.e., easier on-site module transport
- No need for de-icing

Modul

**VEX4000 - REVERSIBEL VARMEPUMPE**  
**VEX4000 - REVERSIBLE HEAT PUMP**

Installation



With the rotary heat exchanger housed between the evaporator and the condenser.

With this solution you get:

- The lowest energy consumption
- Option for cold recovery

With heat exchanger and heat pump housed in separate modules. This solution can be selected with either a rotary heat exchanger or a plate heat exchanger (counterflow heat exchanger or crossflow heat exchanger)

With this solution you get:

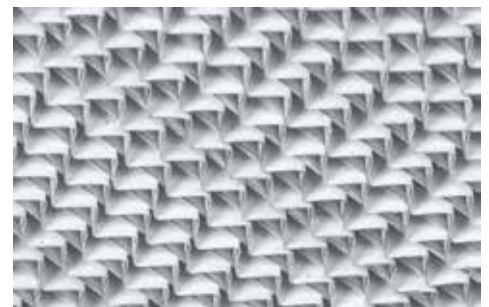
- A compact solution, i.e. easier on-site transport of modules
- No need for de-icing

- Low energy consumption
- High efficiency across the whole capacity range
- Long lifetime
- Minimal noise level

- Very reliable and long lifetime
- Precise injection of coolant in evaporator
- Optimal evaporation means lower energy consumption

- Increased capacity with the same power consumption = increased efficiency
- Reduced risk of water hammer

We recommend that VEX4000RHP-ER and VEX4000RHP are configured with a sorption rotor – especially if the unit is to be installed in an area with a hot and humid climate.



Modul

## VEX4000 - REVERSIBEL VARMEPUMPE VEX4000 - REVERSIBLE HEAT PUMP

Curve

