

CMEV air handling unit

## A11058157

### CX3030 Right

Compact and low-noise ceiling-mounted units, an ideal solution for optimal use of space



#### PRODUCT BENEFITS

- For fitting above suspended ceiling
- Highly compact for when space is limited
- Low sound or noise level

#### Product description

CX3000 ceiling units are available in six sizes, covering airflow up to 3,300 m<sup>3</sup>/h (ERP18). The CX3000 is designed for integration into a suspended ceiling, or fitting into a ceiling or floor partition. The CX3000 is a highly space-efficient solution, suitable for renovation or new build projects.

The CX3000 can be selected in a Left or Right version. Water heating coil (HW) for integration and additional coils for duct mounting can be ordered as accessories: electric heating coil (PHE), electric heating coil (AHE) and/or cooling/heating coil (COCW).

The CX3000 is controlled by the advanced EXcon control system.

#### Fields of application

New, Refurbishment

#### Installation

- Indoor above (false ceiling)
- Round or rectangular duct mounting
- Right and left variants

#### Main characteristics

- 6 CX3000 models from 500 to 3 300 m<sup>3</sup>/h
- Counterflow monoblock units
- free-hanging design with double plate panels
- External finish: Aluzinc AZ185: corrosion class C4
- 50 mm mineral wool insulation, density 70 kg/m<sup>3</sup>
- EN1886 values: D2, L2/L2, T2, TB3, F9
- EC motor with high efficiency B wheel Metal/Composite
- Easy service and maintenance access: hinged doors or sliding rails for the doors as optional accessories
- High-performance heat exchanger
- Modulating bypass
- Filter options for optimised air quality.: panel filter ISO ePM10 50% (M5) or ISO ePM1 50% (F7) standard filters, option for ISO ePM1 80% (F9)
- EXcon Control System
  - Constant speed
  - multi-speed
  - Constant pressure
  - 0–10 V
- Configuration and monitoring via
  - HMI cable for remote control
  - option: Web server and BMS Communication via Modbus RTU/RS485, BACnet MSTP/BACnet IP protocol
  - option: Web server and BMS Communication via bridge to Modbus TCP/IP or LON protocol

## CMEV air handling unit

**A11058157****CX3030 Right****Supplementary characteristics**

- EXcon Control System:
  - Constant speed,
  - Constant airflow,
  - Constant pressure,
  - Air measurement control CO<sub>2</sub>/VOC sensor (0–10V signal). - Controlled pressure,
  - Built-in clock: operation hours can be controlled by means of a timer,
  - Remote control system via cable,
  - BMS Communication via Modbus RTU and Bacnet TCP/IP protocols.
- - Constant air speed (CAV). - Variable air speed (VAV).
  - Airflow controlled - demand controlled (DCV) using CO<sub>2</sub>/VOC sensor (0–10V signal) ,
  - Option: Built-in web server,
  - Option: BMS communication via Modbus RTU/RS485, Modbus TCP/IP, BACnet, MSTP/BACnet IP.

**Accessories**

Désignations	Variants
Syphon/water trap for VEX40T/Kit	A11023483
2» HMI touchpanel	2018641
Temperature sensor, Modbus, outdoor	2009595
Motion sensor	2005689
CO <sub>2</sub> sensor, duct	2025140
HW050X08002U0UL	UG5AFR24V-0.6
Smoke detector	

**General data**

Fluid temperature (air)	-20°C ....+35°C
Ambient temperature range	-40°C....+40°C

**Fan data**

Max. Total efficiency (A-D) (%)	65,5
Efficiency level requirements	62N (2015)
ECO efficiency level during optimal operating point	83,6N
EC motor	With motor controller (VSD)
Power supply	1x230 V + N + PE □ 50 Hz

**Dimensional data**

A (mm)	1800
B (mm)	1500
C (mm)	480
Weight (kg)	230
Connection h (mm)	300
Connection l (mm)	550

**Airflow data**

Minimum airflow	152
Max. airflow ErP (m <sup>3</sup> /h)	1600
Max. airflow (m <sup>3</sup> /h)	1680

**Heat recovery data**

Max. exchanger output (%)	94
Max. current absorbed (kW)	5

**Electrical datas**

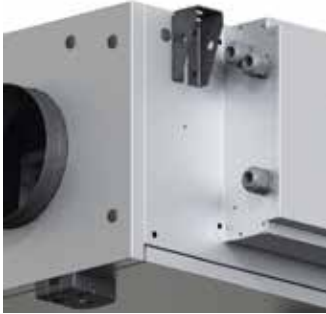
Frequency (Hz)	50
Protection rating	IP20
Max. power of electrical coil 1 (kW)	8
Max. electrical output of unit (kW)	1,12
Voltage (V)	1x230
Max. power of electrical coil 2	4
Maximum current - unit (A)	5,0
Power consumption (kW)	0,52

CMEV air handling unit

**A11058157**

**CX3030 Right**

**Installation**



The cabinet is made of 0.8-mm galvanised steel corrosion class C4 in accordance with EN/ISO12944-2 and insulated with 50 mm mineral wool. This results in low noise emissions to the surrounding environment.



Heat recovery occurs via a counterflow heat exchanger in aluminium with a very high efficiency. (Without condensation 80-85%, with condensation up to 95%). The integrated bypass has multiple functions:

- > When heat recovery is not desired, the outdoor air is directed outside the heat exchanger
- > If night cooling is desired, the outdoor air is directed outside the heat exchanger
- > In case of freezing of the heat exchanger, the outdoor air is directed outside the heat exchanger so that the exchanger can thaw. The supply air (outdoor air) then requires extra heating capacity via the postheater – the reheater is a prerequisite for the system to function continuously

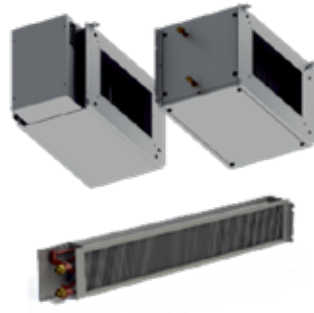


The motors are of type EC and are extremely efficient. They comply with the requirements of the Ecodesign Directive.



CX3000 is equipped with an optimised centrifugal impeller with backward curved blades.

The wheel is made from a composite material and its shape provides great performance with low energy consumption.



CX3000 accessories

- HW: Water heating coil for integration
- P-HE: Duct-mounted electric preheating coil
- A-HE: Duct-mounted electric heating coil
- CW: Duct-mounted cooling/heating coil

Find technical data for the different heating and cooling/heating coils under each size.



The easily accessible connection box with built-in isolator switch and control fuses ensures easy access for connection and adjustment. Read more about electrical connection in the guide "Electrical guide for CX3000"



Panel filters for supply air and extract air– the filters are easy to replace.

The filters are available in the following filter classes:  
Extract air: ePM10 50% (M5)  
Supply air: ePM1 50% (F7)

See filter size under Filters for the individual CX size.



Extra filter housing for improved indoor climate It is possible to insert a duct-mounted filter housing after the unit on the supply air side.

Filter class: ePM1 80%(F9)

The compact unit is designed in accordance with German hygiene standard VDI6022, which ensures units are accessible for service and the formation of mould or other bacteria that could negatively impact air quality is prevented. Read more about this standard in the VDI section under certificates further down this page.

CMEV air handling unit

**A11058157**

**CX3030 Right**



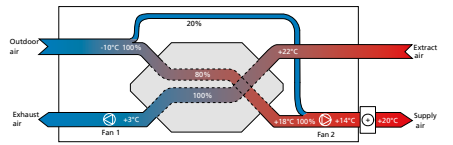
The CX3000 is equipped with hinged doors that can be opened on both sides. If the location and space make it difficult to fit the suspended doors, we can supply rails (accessories) that are mounted under the unit so that the doors can be dismantled and placed on the rails while the unit is being serviced.

All CX3000 must be commissioned to ensure that the unit is correctly set up. This is done via a Windows program, CX3000 Configurator, which can be downloaded via a link at the top of the page.

Configuration takes place via a LAN cable connected to the Excon-Master-Module and a PC.

CMEV air handling unit

**A11058157**  
**CX3030 Right**



**CONTROL SYSTEM FOR CX3000**

All CX3000 units are available with integral EXcon control systems for optimum control of the indoor climate in practically every application area.

EXcon control systems can be used for controlling airflows, heating, cooling, etc. The operating program is configured for how and when the control system will switch between the integral functions.

The operation of the unit is constantly monitored by the EXcon control system, which protects the counterflow heat exchanger against icing, against frost damage to the water heating and cooling coils, and against overheating of the electric heating coils.

Using the 3 integrated protocols BACnet IP, Modbus TCP/IP or Modbus RTU, it is easy to monitor virtually all parameters via BMS, as well as control the operation of the system.

With the EXcon control system's many functions, it is possible to optimise and adapt the system's operation to achieve the most energy-efficient regulation by e.g. compensating for the outdoor temperature, changing the regulation to suit the summer or winter season, limit active cooling or heating, automatically lower the temperature setpoint and cool down the building at night during the warm summer periods.

Integrated functions in the EXcon control system for CX3000:

- > Automatic temperature reduction in low-speed operation
- > Alarm and data log
- > Control using a day, week or year plan
- > Extended operation for set periods
- > External switch between regulation levels
- > Alarm email (requires local mail server)
- > Summer night cooling
- > Outdoor air temperature compensation
- > Automatic summer/winter time changeover
- > Filter monitoring via pressure measurement
- > Portal solution with total monitoring of 5 systems
- > Connection to CTS/BMS via BACnet IP, Modbus TCP or RTU (over 900 registers)

- > 2 configurable digital inputs for:
  - Fire alarm (factory setting)
  - AHU emergency stop
  - Manual override for Low speed
  - Manual override for Medium speed
  - Manual override for High speed (factory setting)
  - Frost alarm
  - External start/stop
  - EXTERNAL RESET OF ALARMS

- > 2 configurable outputs for:
  - Operating signal (factory setting)
  - An alarm (factory setting)
  - B alarm
  - Alarm reset
  - Summer night cooling active
  - Summer season active

**CONTROL METHODS**

The EXcon control system offers various regulation options, where the larger CX models can also offer pressure-controlled regulation. Below is an overview of the options:

CX3010-3020:

- > Temperature-controlled de-icing with modulating bypass damper
- > Static monitoring of filter pressure loss
- > Operation of electric heating coils is released using thermostat, which protects against overheating at low airflows.
- > Regulation options:

**BYPASS DE-ICING**

The CX3000 is designed with bypass de-icing. If there is a risk of icing, then a certain amount of outdoor air will bypass the heat exchanger and go directly to the heating coil. This increases the demands on the heating coil's output. However, it avoids a costly preheating coil.

**Heating coil and de-icing function:**

The de-icing situation is shown above, a heating coil is included here. The heating coil ensures that the supply air temperature does not drop drastically during the de-icing process so that a comfortable temperature is maintained.

**Preheating coil and de-icing function:**

To avoid possible icing, the temperature of the outdoor air can be kept at a safe level with a preheating coil. The preheating coil ensures that the temperature of the outdoor air never falls below the critical point where there is a risk of icing up the heat exchanger.

**Which method is used when?**

The heat exchanger has 2 forms of frost protection:

- > Temperature-controlled
- > Pressure-controlled (CX3030-3060 only)

If the unit can run pressure-controlled de-icing, it is possible during commissioning to choose between pressure-controlled or temperature-controlled de-icing

Temperature-controlled de-icing assesses the risk of the heat exchanger starting to ice up, while pressure-controlled de-icing more precisely measures the amount of icing in the heat exchanger.

**FROST PROTECTION VIA TEMPERATURE SENSOR**

**General:**

The damper on the counterflow heat exchanger is controlled by a modulating signal from the EXcon control system. The counterflow heat exchanger is protected against icing by recording the exhaust air temperature after the extract air has passed the heat exchanger.

**How temperature-controlled frost protection works**  
At an exhaust air temperature below the set value in the EXcon control system (Ice protection + Ice protection P-band), the bypass damper is overridden by modulation to 100% open. The more the exhaust air temperature falls below this point, the more the bypass damper will open, modulating to 100% open. If the exhaust air temperature reaches the value set in Ice protection, the bypass damper will be 100% open.

The outdoor air then passes the heat exchanger and the extract air from the room passes through the heat exchanger. This function will, by virtue of the relatively high room temperature, cause the ice coating on the counterflow heat exchanger to thaw.

**FROST PROTECTION VIA PRESSURE TRANSMITTER (CX3030-60 ONLY)**

**General:**

The heat exchanger is protected against icing by measuring the pressure drop across the exchanger. The current pressure drop is measured with a pressure transmitter with measuring points on both sides of the heat exchanger.

De-icing of the exchanger starts when the current pressure drop across the exchanger exceeds the calculated point in the parameter Current de-icing pressure.

The calculated setpoint is a calculation of the percentage increase in pressure drop across the exchanger. De-icing starts if the pressure drop across

CMEV air handling unit

## A11058157 CX3030 Right

### Curve

